



Switchgear set ZB-22



Switchgear set type ZB-22 is an electrical device designed for use in underground mining pits in non-explosion hazard conditions and on the ground in non-explosive hazard conditions.

Switchgear set ZB-22 comprises of three switchgears units connected by a busbar type BPP-05 and type BPP-06, mounted in a common structure.

Switchgear set ZB-22 is designed for connecting and switching-on receivers to the mine 3-phase grid with insulated star point on the transformer (system IT) for rated voltage of 500V.

TECHNICAL DATA:

rated voltage of main circuits insulation
napięcie znamionowe izolacji obwodów głównych
rated voltage of auxiliary circuits insulation
rated supply voltage
maximum load current of 500V outlets
no of outlets 500V
dimensions
weight

IP54
660 V
250 V
500V, 50 Hz
acc. to Tab. 1
3
1800 x 1300 x 370mm (height x width x depth)
120 kg

Table 1

Type of switchgear	Maximum load current outlet 1 [A]	Maximum load current outlet 2 and 3 [A]	Rated current of clamps from the supply side (Inz) [A]
Switchgear set ZB-22	250	400	400

CONSTRUCTION

The switchgear is manufactured from steel sheets. The whole is placed on the common carrier frame. Frame can be placed directly on the ground.

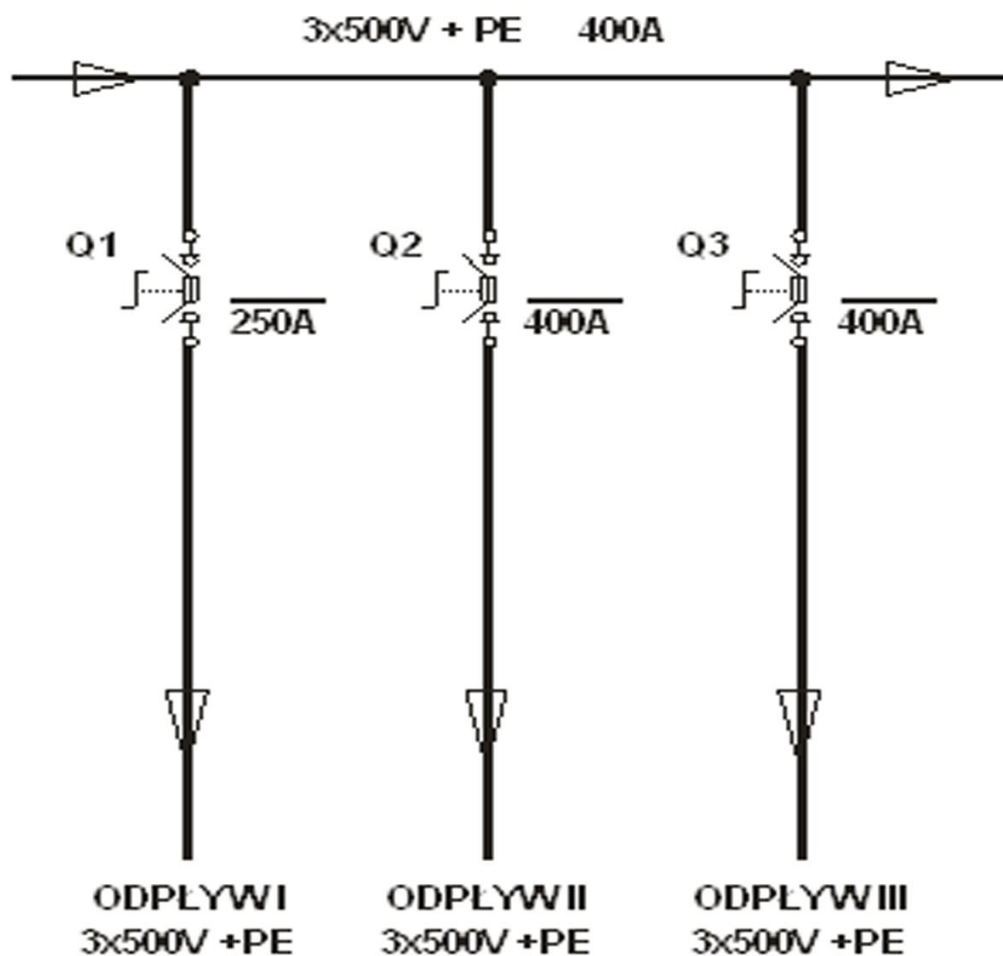
MODE OF OPERATION

Turning-on of the outlet is carried out by switching lever drive of disconnector Q1-Q3 in „TURNING-ON” position, and turning-off the outlet in „TURNING-OFF” position.

SCHEMATIC DIAGRAM

Legend:

odpływ I-IV – outlet I-IV



Orders should be submitted in writing or by fax to the address:

 **Instal-Service PL**

Spółka z ograniczoną odpowiedzialnością
Spółka komandytowa

58-506 Jelenia Góra, ul. Wrocławska 15a

tel. (+48 075) 64-57-950

fax. (+48 075) 64-57-951

e-mai: instal@instal-service.pl